



landscaped with the support of nature

Primeclass Landscaping

design + implementation

COMPANY OVERVIEW

Incorporated since 20th August 1993, Primeclass Landscaping Sdn Bhd (PCLSB) offers total landscape solutions in design, planning implementation and maintenance works. PCLSB is recognized for its creative initiatives with residential, commercial, industrial, and infrastructure works ensuring the highest of quality and efficiency with the commitment of our experienced and dedicated professionals.

In addition, PCLSB strives to provide thoughtful design work that elicits a sense of place, unique to each client's /project's need, whilst being sensitive to budget and client/project requirements.

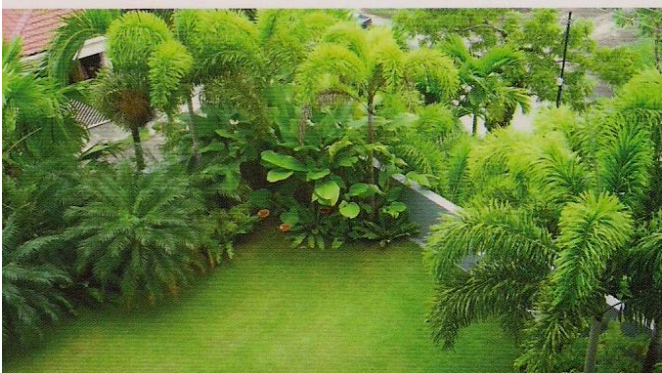
Primeclass Landscaping's proven strengths include the ability to achieve innovative designs, completed ahead of project schedule. Our capability to execute is ensured by our own nursery of 45 acres and other related resources.



COMPANY PROFILE

Primeclass Landscaping, a member of Primeclass Group of Companies provides high quality and innovative landscape planning, design, implementation and maintenance for both the public and private sectors. We have the ability and experience to service a diverse range of projects, from private houses, hotels and resorts, corporate offices to public open spaces.

PCLSB is mainly a Design/Build firm, in contracting us to do your design work, you are contracting us to do the implementation works on your project. As we undertake both the design and build, we have the flexibility to change designs to suit specific site conditions ensuring optimum cost and time savings for our clients. Our projects are Backed by professional indemnity insurance to provide our clients with the confidence and security of the development. We constantly strive for unequalled customer satisfaction and attention to detail.



LANDSCAPE, PLANNING AND DESIGN

Our Landscape Planning and Design department strives to be creative and well balanced to harmonize the architectural elements with the natural environment. Our planning and design services foster a strong collaboration with our clients, architects, engineers and construction representatives to ensure maximum client satisfaction.

Our depth of experience and knowledge will ensure the best plant selection while ensuring the long term Integrity of the development. Through superior landscape design, this will enhance the value of the client's development and its visual appeal.

Our ability to do all phases of a project (in addition to planning and design) gives us a working perspective of the whole and of all of its individual components. We can anticipate and prepare for the needs of each phase of a project, and benefit the client in terms of time and cost effectiveness.



LANDSCAPE CONSTRUCTION

Our Landscape Construction department has solid experience with a wide variety of materials and processes, coupled with a design background to ensure timely, high quality installations. As we are both designer and contractor, the clarity of decisions made at the drawing table stays intact in the field as we bring the design into physical reality.

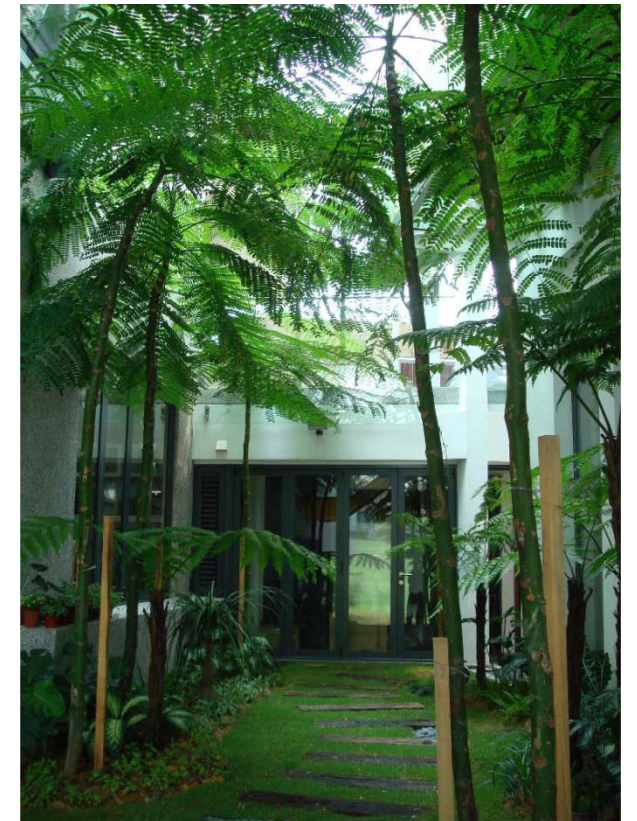
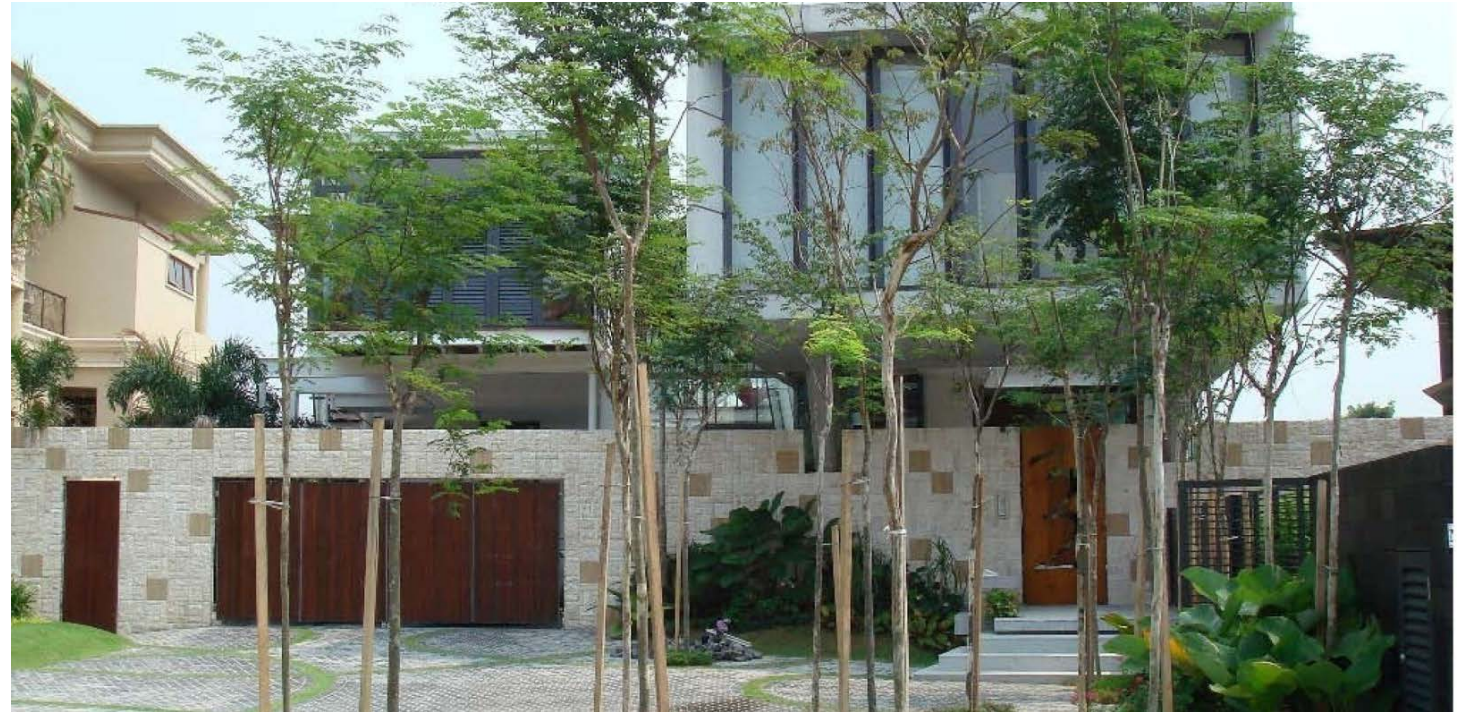
With all our construction (and design/build) works, we do not act as subcontractor, nor do we hire subcontractors unless it becomes beneficial to the client and the project for us to do so. Through this, we ensure fine attention to detail and high quality of workmanship to accentuate the harmony of the natural elements.



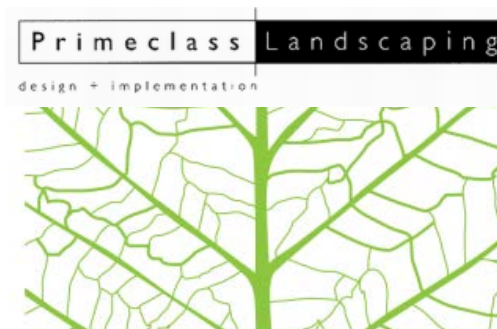


LANDSCAPE MAINTENANCE

Our Landscape Maintenance department provides regular visits by trained staff members to ensure the optimum upkeep and growth of the landscaped environment. The maintenance is planned and provided to suit the age and types of plant life taking into account the many climatic and environmental factors. Our Landscape Maintenance services will provide you with the most cost effective way to growing and maintaining your landscape.



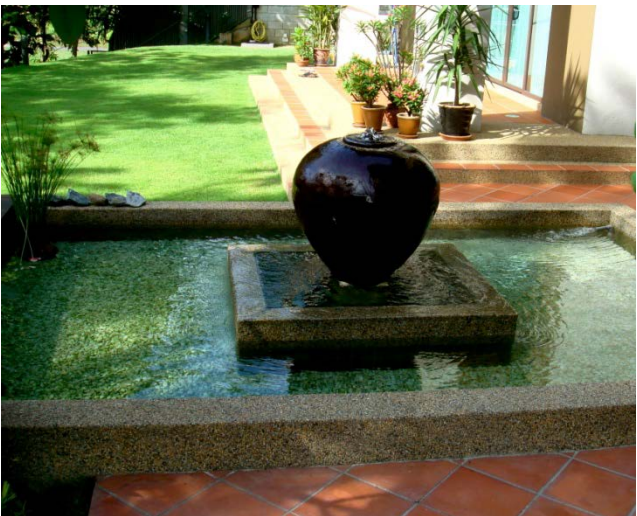
LANDSCAPE DESIGN & BUILD



DAF Residence
The Mines Resort City -
Selangor,
Malaysia
(2006)

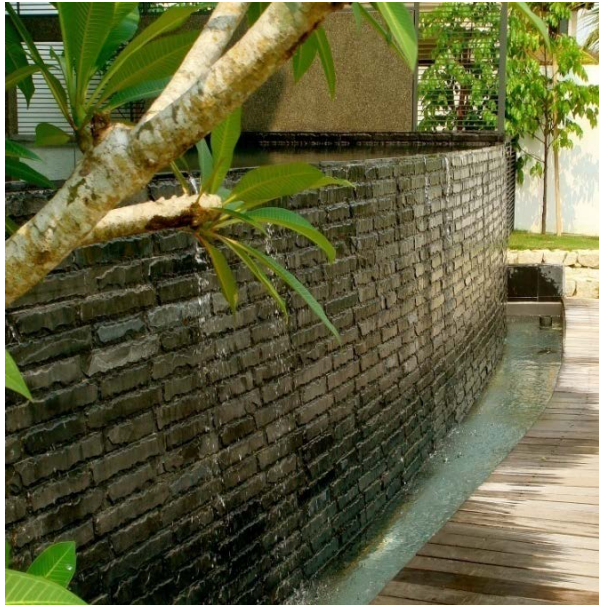


GCH Residence,
Tropicana Indah Resort Homes -
Selangor,
Malaysia
(2006)

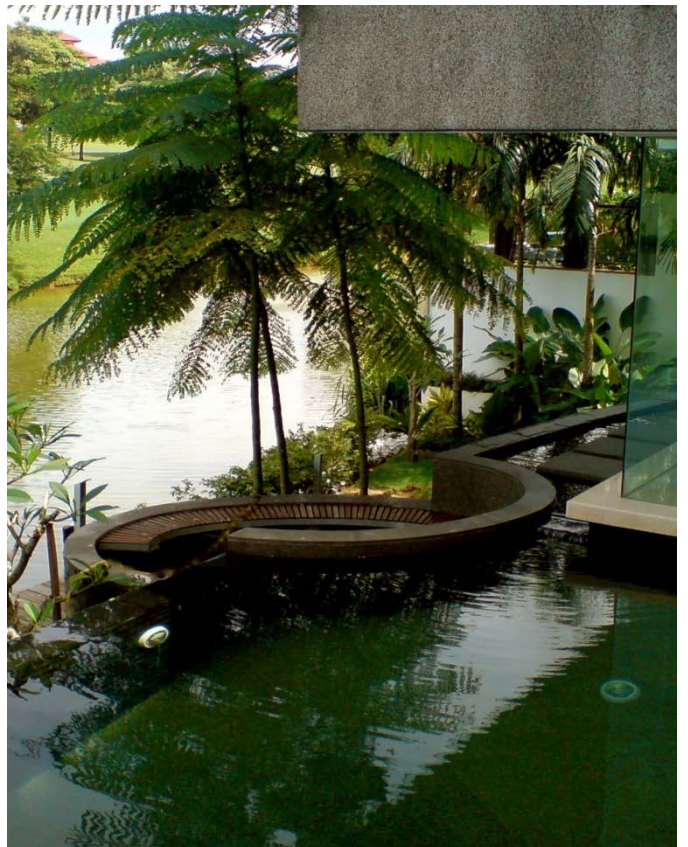
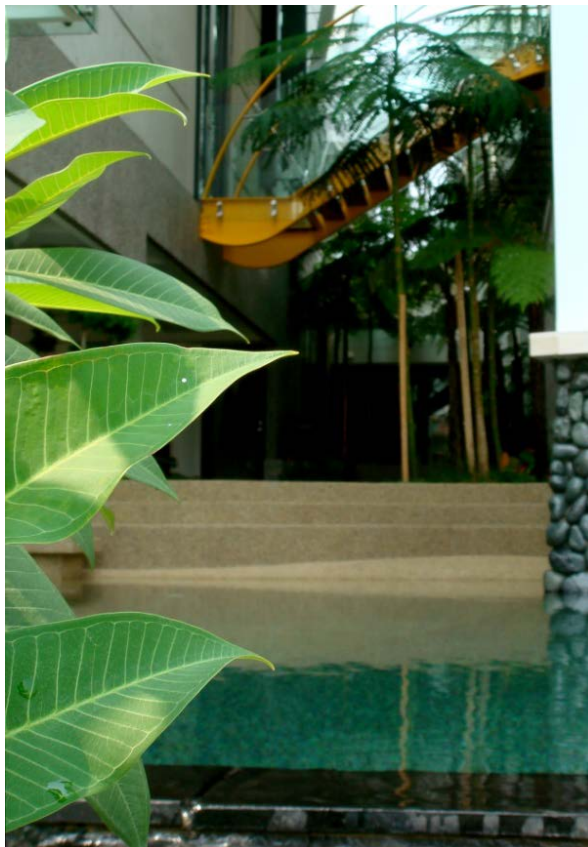


THS Residence

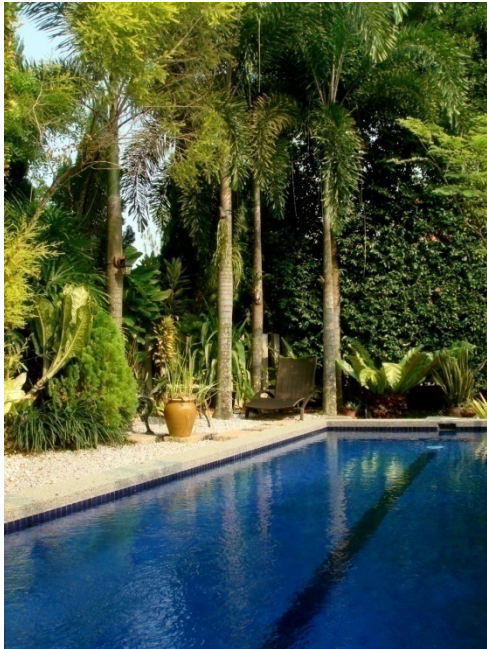
Tropicana Golf & Country Resort -
Selangor,
Malaysia
(2006)



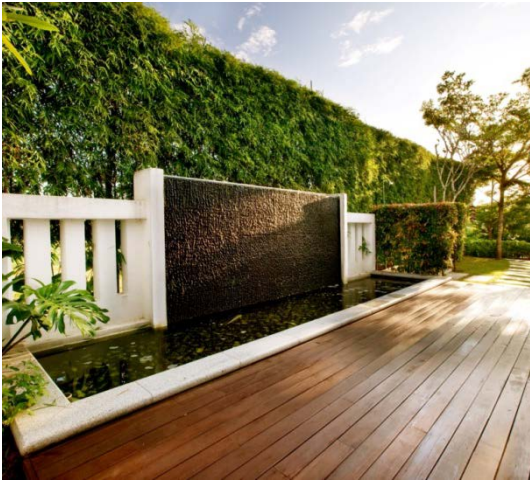
THS Residence
Tropicana Golf & Country Resort -
Selangor,
Malaysia
(2006)



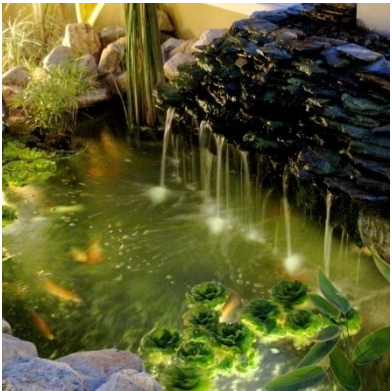
FH Residence
Damansara Impian -
Selangor,
Malaysia
(2007)



Raintree Residence
Perdana Lakeview East -
Cyberjaya,
Malaysia
(2008)



LCT Residence
Ozana Country Resort -
Malacca,
Malaysia
(2009)



DNAM Residence
The Mines Resort City -
Selangor,
Malaysia
(2011)



DYPC Residence
Bukit Tunku -
Kuala Lumpur,
Malaysia
(2012)



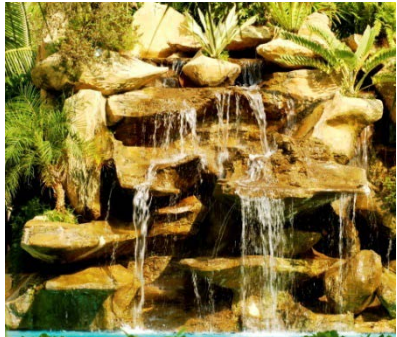
MWS Residence
Vista Kirana , Ayeh Keroh -
Malacca,
Malaysia
(2012)



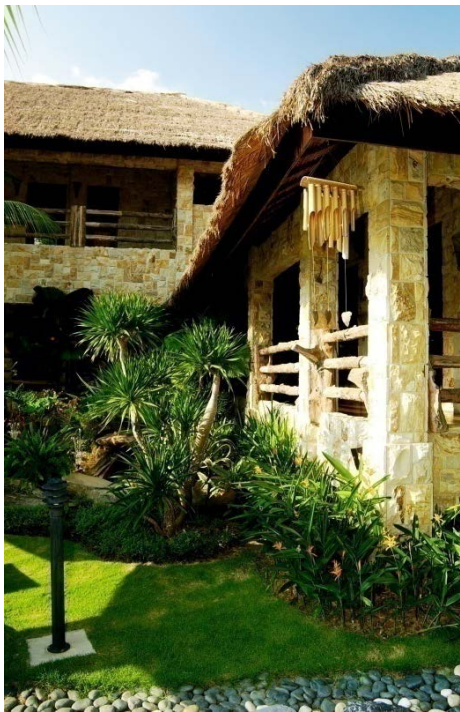
Cyberview Resort & Spa
Cyberjaya,
Malaysia
(1998)



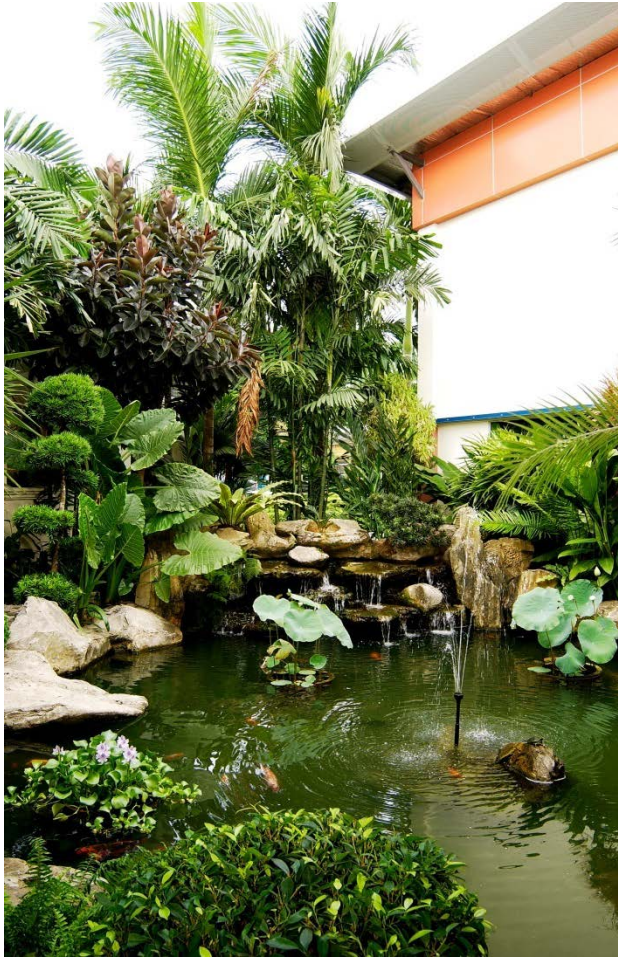
D'Melor Condominium
Cyberjaya,
Malaysia
(1999)



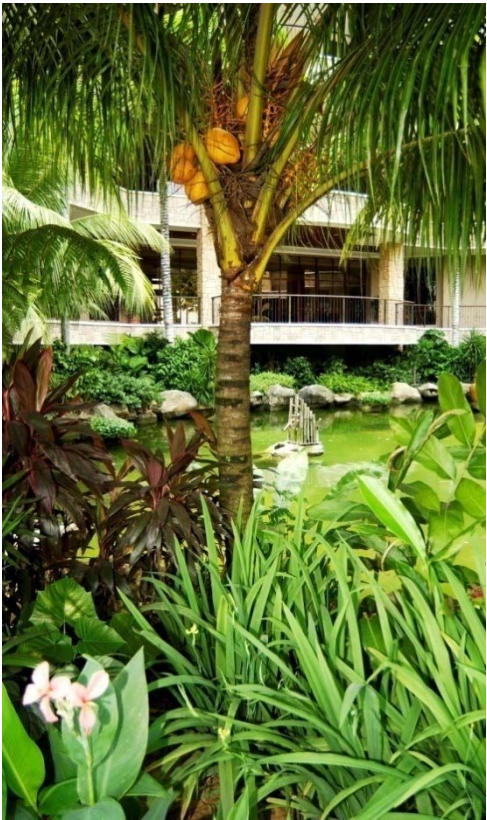
**Sembunyi Spa,
Cyberview Resort & Spa**
Cyberjaya,
Malaysia
(2001)



The Street Mall
Cyberjaya,
Malaysia
(2001)



Multimedia Development Corporation Headquarters
Cyberjaya,
Malaysia
(2001)



Perdana Lakeview East
Cyberjaya,
Malaysia
(2002)



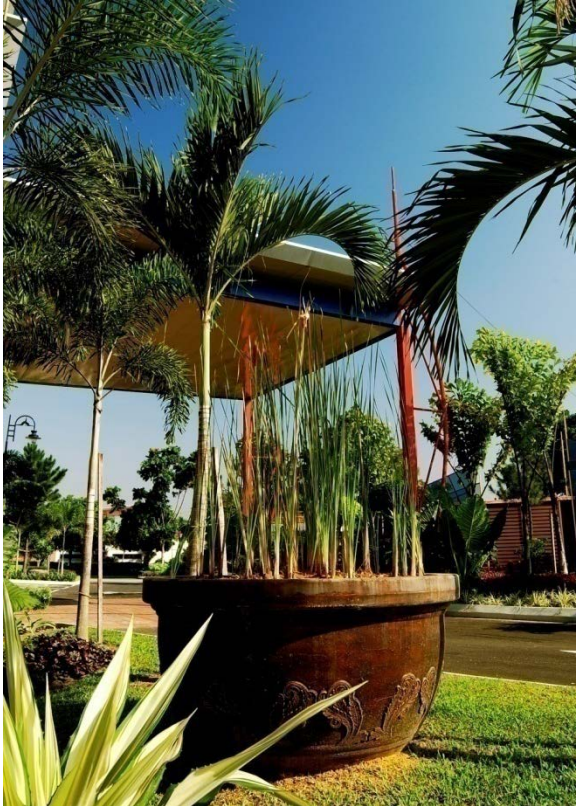
Kawasan Lapang “A”,
Perdana Lakeview East -
Cyberjaya,
Malaysia
(2002)



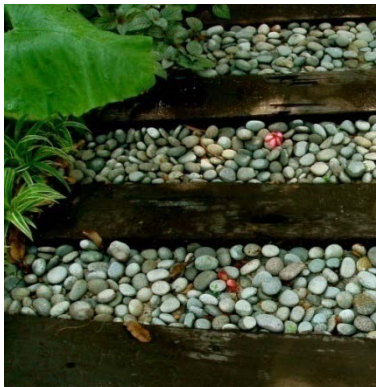
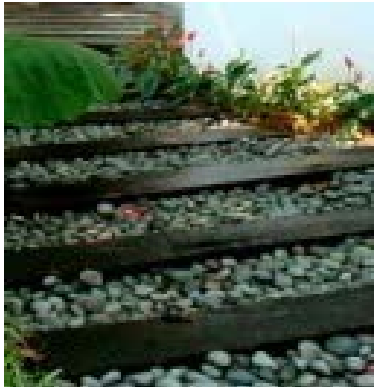
**Tropical Home & Garden
Show Gallery**
Shah Alam -
Selangor,
Malaysia
(2002)



Cyberjaya *University College* of Medical Sciences (CUCMS)
Cyberjaya,
Malaysia
(2003)



Sassorosso Italian Restaurant
Kuala Lumpur,
Malaysia
(2006)



Sri Banyan Residences
Country Heights Resort -
Kajang,
Malaysia
(2007)



Menara Tun Razak
Kuala Lumpur,
Malaysia
(2007)



8@8 Boutique Condominium
Kuala Lumpur,
Malaysia
(2009)



Prima Avenue Sports & Recreation Centre
Cyberjaya,
Malaysia
(2009)



Prima Avenue 1
Cyberjaya,
Malaysia
(2004 - 2009)

Tenants' List

Prima 1
Suruhanjaya Komunikasi &
Multimedia Malaysia (SKMM)
Datashift Sdn Bhd

Prima 2
E2 Power Sdn Bhd
Aridah Palm Oil Sdn Bhd
IBM Malaysia

Prima 3
Old Town White Coffee,
Padi House Restaurant
Tokio Kafe

Prima 4
Kafe Where Else Delight
Kitchen Village

Prima 5
CIMB Bank Berhad
Maybank Berhad
Berjaya Starbucks Coffee Co.

Prima 6
Hewlett-Packard Sdn Bhd

Prima 7
World Health Organization (WHO)
Kementerian Tenaga, Air &
Konumikasi (KTAK)
Suruhanjaya Perkhidmatan Air
Negara (SPAN)

Prima 8
Prima Properties Management SB
Miki Shared Services Sdn Bhd
Experian (Malaysia) Sdn Bhd
Panasonic R&D Centre Malaysia
Sdn Bhd
Suruhanjaya Perkhidmatan Air
Negara (SPAN)
World Health Organization (WHO)



Prima Avenue 2
Cyberjaya,
Malaysia
(2010 - 2012)

Tenants' List

Prima 9
Hewlett-Packard Multimedia Sdn Bhd

Prima 10
RBC Dexia Investor Services (M) Sdn Bhd

Prima 11
Burger King
Original Penang Kayu Nasi Kandar
Lok Yoon Restaurant
Biergarten Café



**Taylor's University Lakeside
Campus**
Subang Jaya -
Selangor,
Malaysia
(2011)



Taylor's University Lakeside Campus
Subang Jaya -
Selangor,
Malaysia
(2011)



Aragreens Residences
Show Gallery
Ara Damansara -
Selangor,
Malaysia
(2012)



Retreat Food Haven
Cyberjaya,
Malaysia
(2012)

Tenants' List
Burger King
Original Penang Kayu Nasi Kandar
Lok Yoon Restaurant
Biergarten Café



Primera Suites SOHO
Cyberjaya,
Malaysia
(2012)



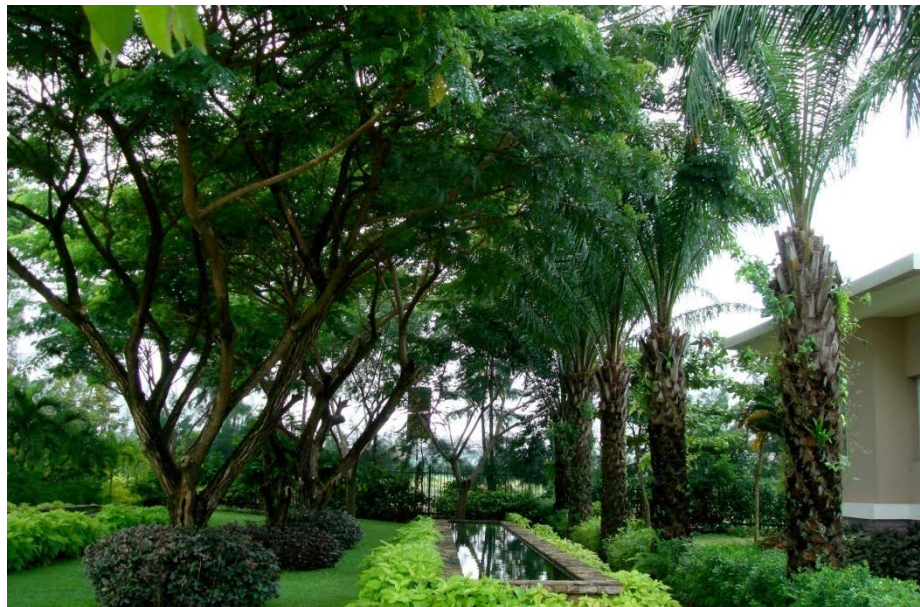
Taylor's College Subang Jaya
Subang Jaya -
Selangor,
Malaysia
(2013)



LANDSCAPE DESIGN CONSULTANCY



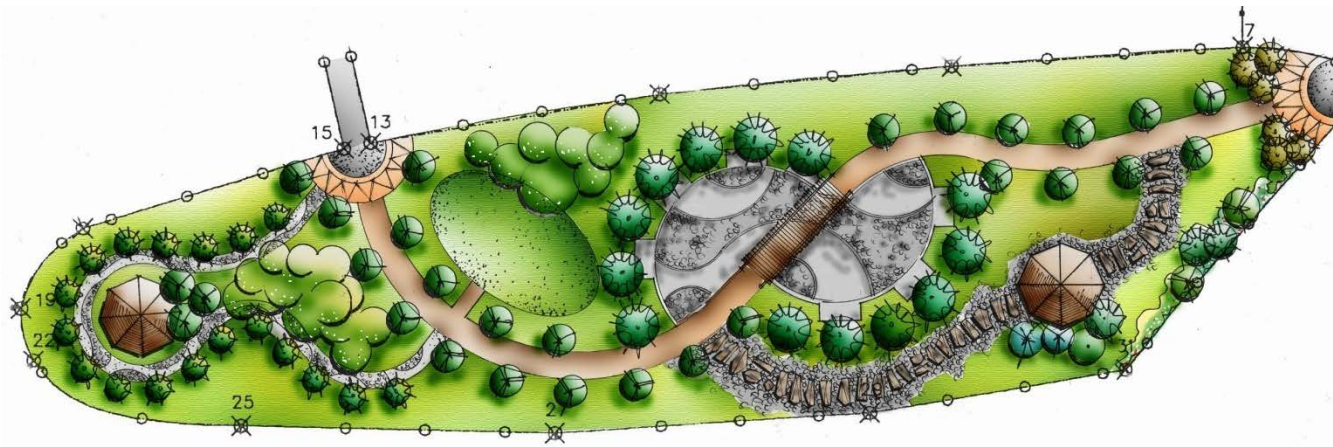
**The Waterfront
Serviced Residences**
Saigon South New City Centre -
Ho Chi Minh City,
Vietnam
(Designed 2003, Built 2005)



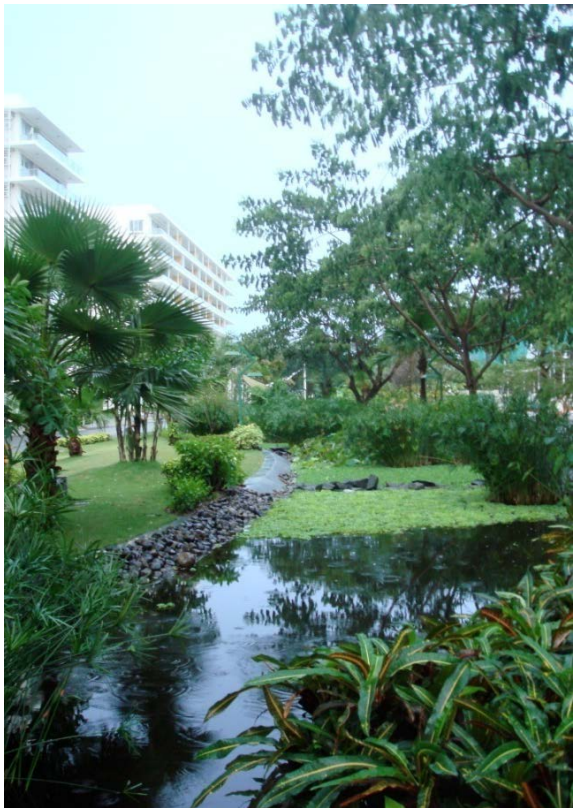
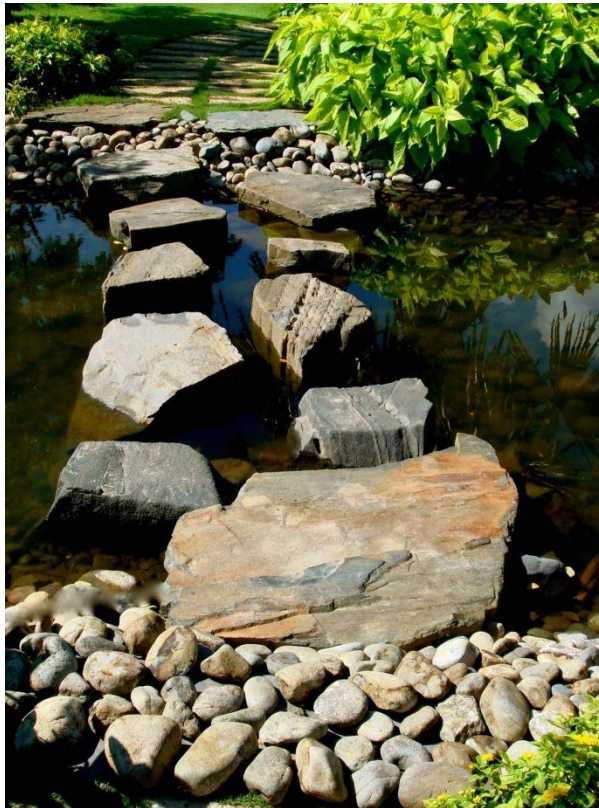
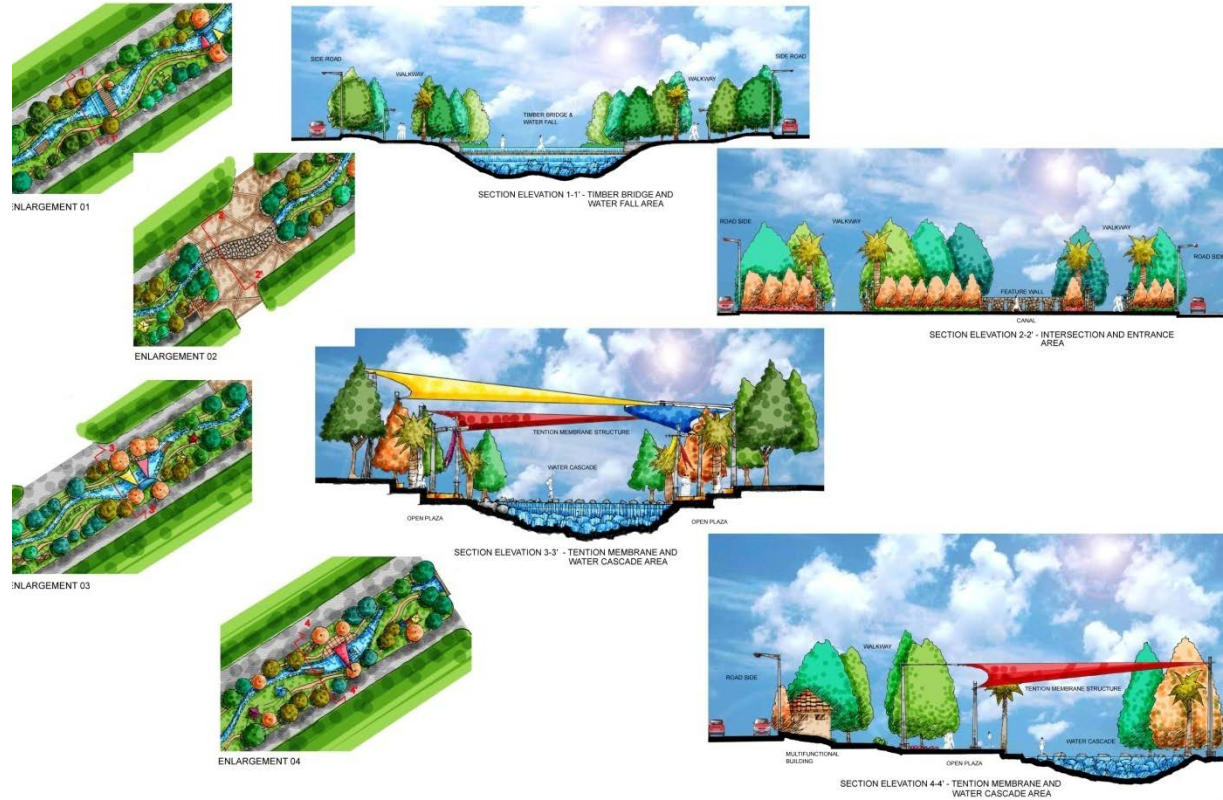
**The Waterfront
Serviced Residences**
Saigon South New City Centre -
Ho Chi Minh City,
Vietnam
(Designed 2003, Built 2005)



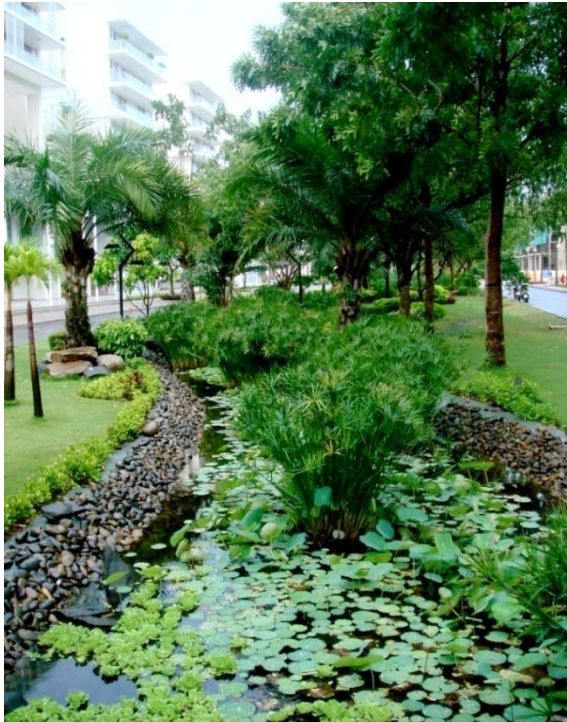
Phu Gia 99 Luxury Villas
Saigon South New City Centre -
Ho Chi Minh City,
Vietnam
(Designed 2003, Built 2005)



Canal Street Commercial Development
Saigon South New City Centre -
Ho Chi Minh City,
Vietnam
(Designed 2005, Built 2007)



Canal Street Commercial Development
Saigon South New City Centre -
Ho Chi Minh City,
Vietnam
(Designed 2005, Built 2007)



Sing-Viet New City Centre
Ho Chi Minh City,
Vietnam
(2007)



ENLARGEMENT 1 – FOCAL LANDMARK



Sing-Viet New City Centre
Ho Chi Minh City,
Vietnam
(2007)



S13 Neighbourhood Park
 Saigon South New City Centre -
 Ho Chi Minh City,
 Vietnam
 (Designed 2007, Built 2010)



S19 Neighbourhood Park
Saigon South New City Centre -
Ho Chi Minh City,
Vietnam
(Designed 2007, Built 2010)



S19 Neighbourhood Park
Saigon South New City Centre -
Ho Chi Minh City,
Vietnam
(Designed 2007, Built 2010)



Southside Urban Park
Saigon South New City Centre -
Ho Chi Minh City,
Vietnam
(Designed 2007, Built 2010)



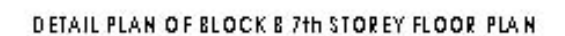
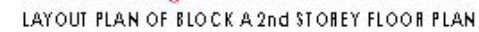
Southside Urban Park
Saigon South New City Centre -
Ho Chi Minh City,
Vietnam
(Designed 2007, Built 2010)



P2 Neighbourhood Park & Boat Club

Saigon South New City Centre -
Ho Chi Minh City,
Vietnam
(Designed, 2008, Built 2011)





Grandview Residences
Saigon South New City Centre -
Ho Chi Minh City,
Vietnam
(Designed 2009, Built 2010)



The Panorama Residences
Saigon South New City Centre -
Ho Chi Minh City,
Vietnam
(Designed 2009, Built 2011)



The Panorama Residences
Saigon South New City Centre -
Ho Chi Minh City,
Vietnam
(Designed 2009, Built 2011)



Crescent Mall

Saigon South New City Centre,
Ho Chi Minh City,
Vietnam
(Designed 2010, Built 2012)



CONCEPTUAL MASTER PLAN



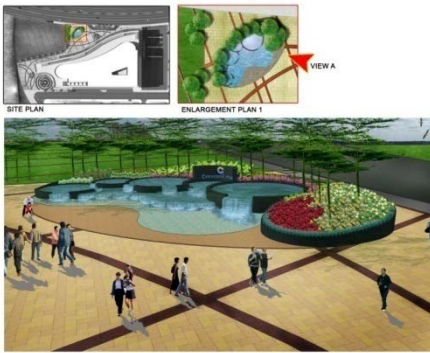
PERSPECTIVE 3 - View C



CONCEPTUAL LANDSCAPE DESIGN



PERSPECTIVE 4 - View D



PERSPECTIVE 1 - View A



PERSPECTIVE 2 - View B



PERSPECTIVE 4 - View D



PERSPECTIVE 1 - View A



PERSPECTIVE 3 - View C



PERSPECTIVE 2 - View B

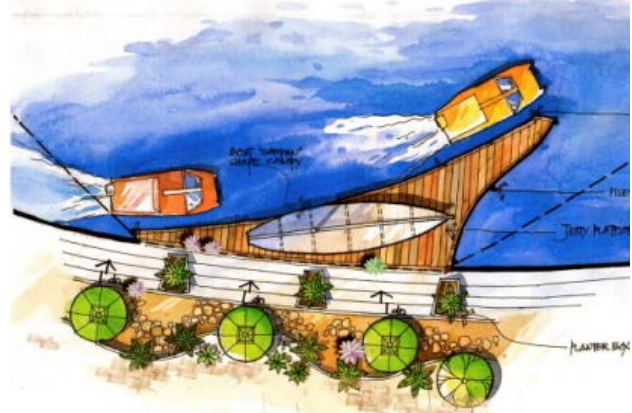
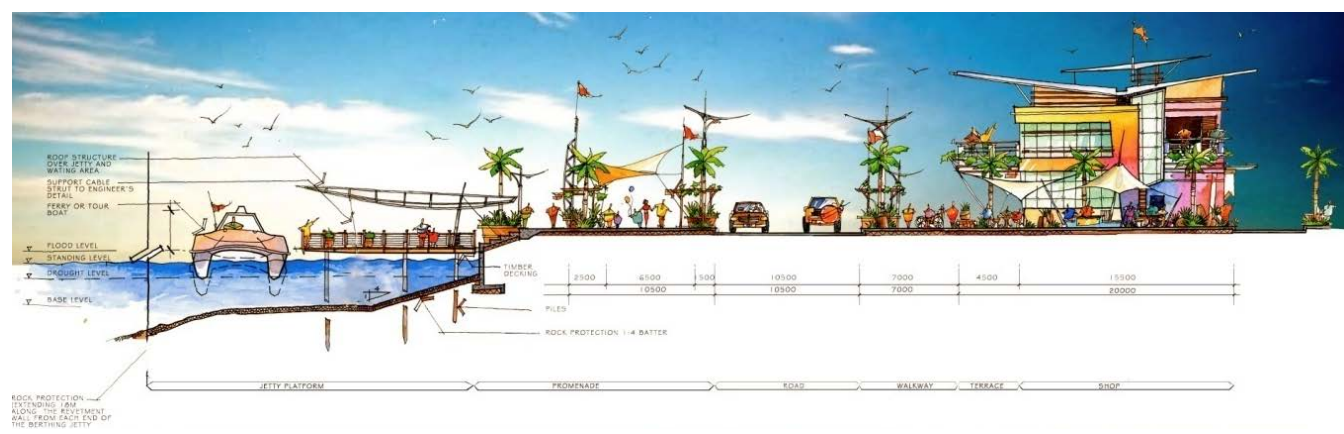
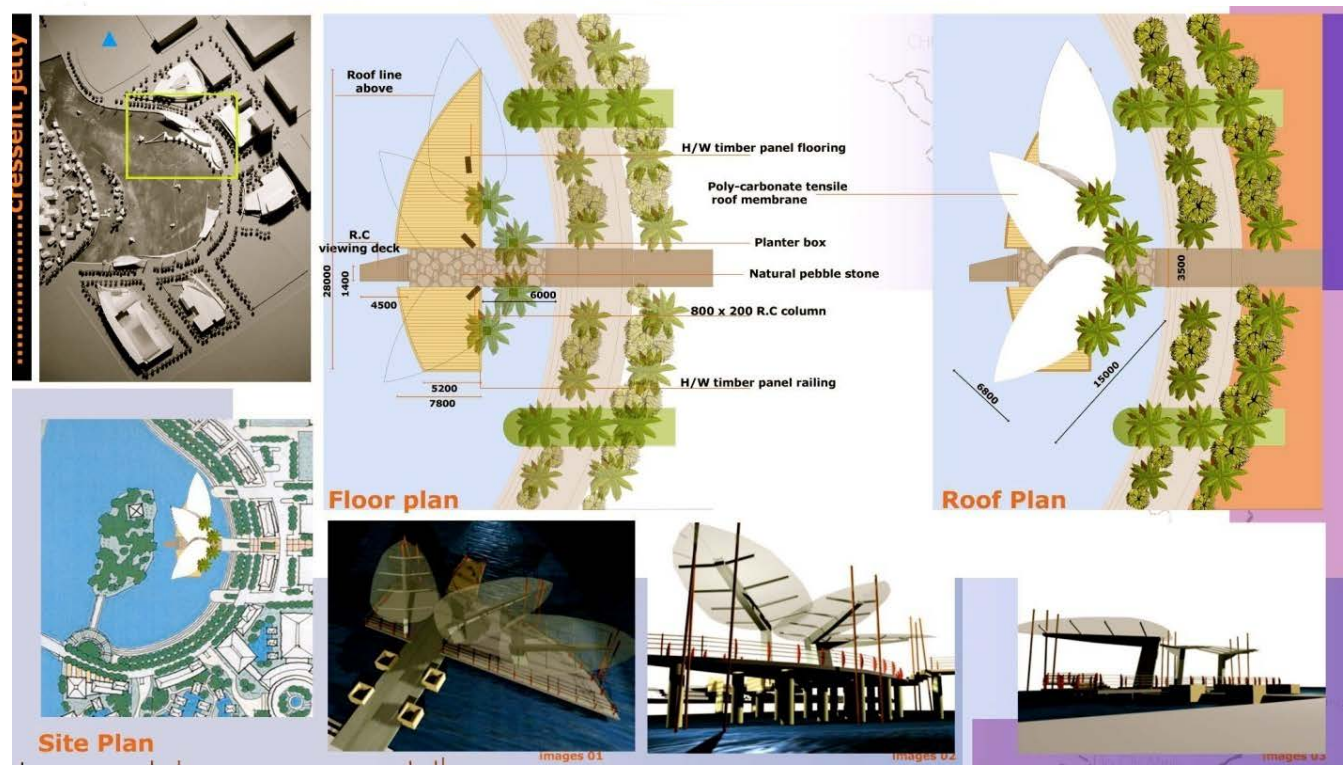


Crescent Mall

Saigon South New City Centre,
Ho Chi Minh City,
Vietnam
(Designed 2010, Built 2012)



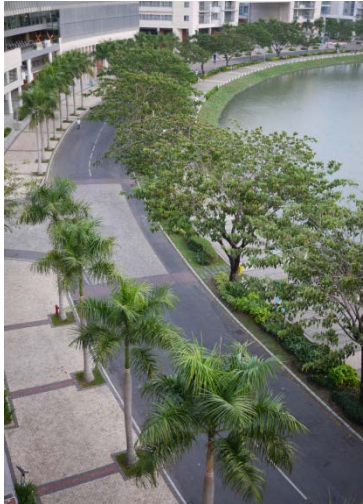
**Crescent Promenade
Commercial Development**
Saigon South New City Centre
Ho Chi Minh City,
Vietnam
(Designed 2008, Built 2011)



Crescent Promenade
Commercial Development
Saigon South New City Centre
Ho Chi Minh City,
Vietnam
(Designed 2008, Built 2011)



Crescent Promenade
Commercial Development
Saigon South New City Centre
Ho Chi Minh City,
Vietnam
(Designed 2008, Built 2011)



Crescent Promenade
Commercial Development
Saigon South New City Centre
Ho Chi Minh City,
Vietnam
(Designed 2008, Built 2011)



**Happy Valley Residential
Development**
Saigon South New City Centre,
Ho Chi Minh City
Vietnam
(Designed 2010)



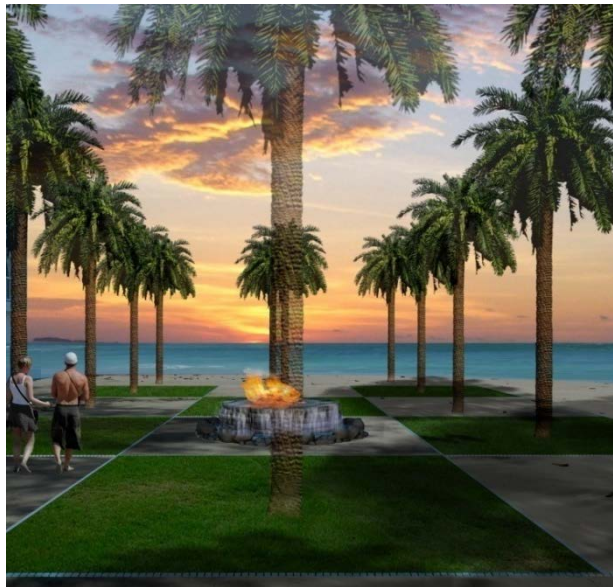
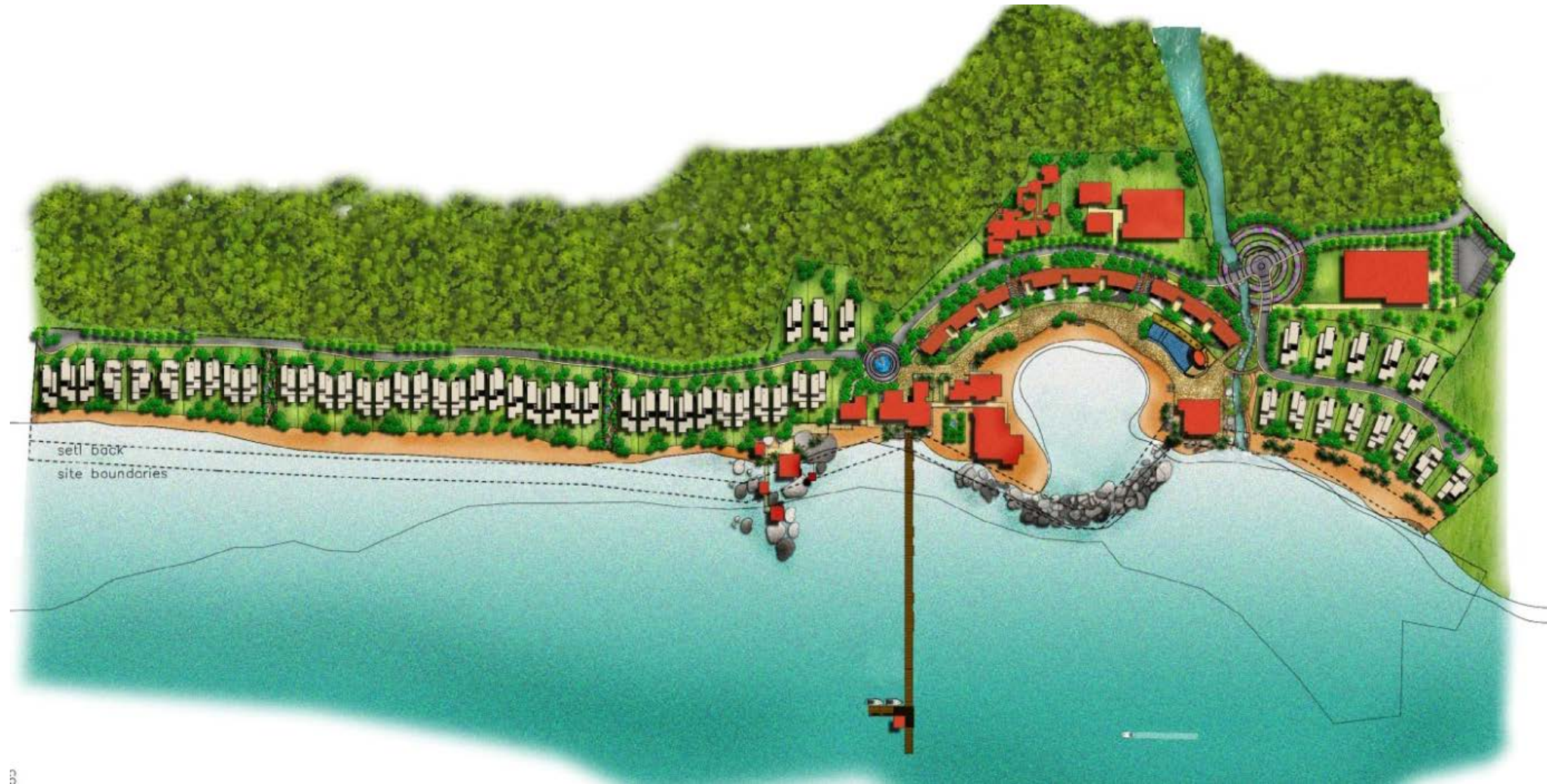
**Happy Valley Residential
Development**
Saigon South New City Centre,
Ho Chi Minh City
Vietnam
(Designed 2010)



**Happy Valley Residential
Development**
Saigon South New City Centre,
Ho Chi Minh City
Vietnam
(Designed 2010)



Coral Beach Resort
Nga Trang
Vietnam
(Designed 2011)



Coral Beach Resort
Nga Trang
Vietnam
(Designed 2011)



Oceanami Resort
Long Hai
Vietnam
(Designed 2010)



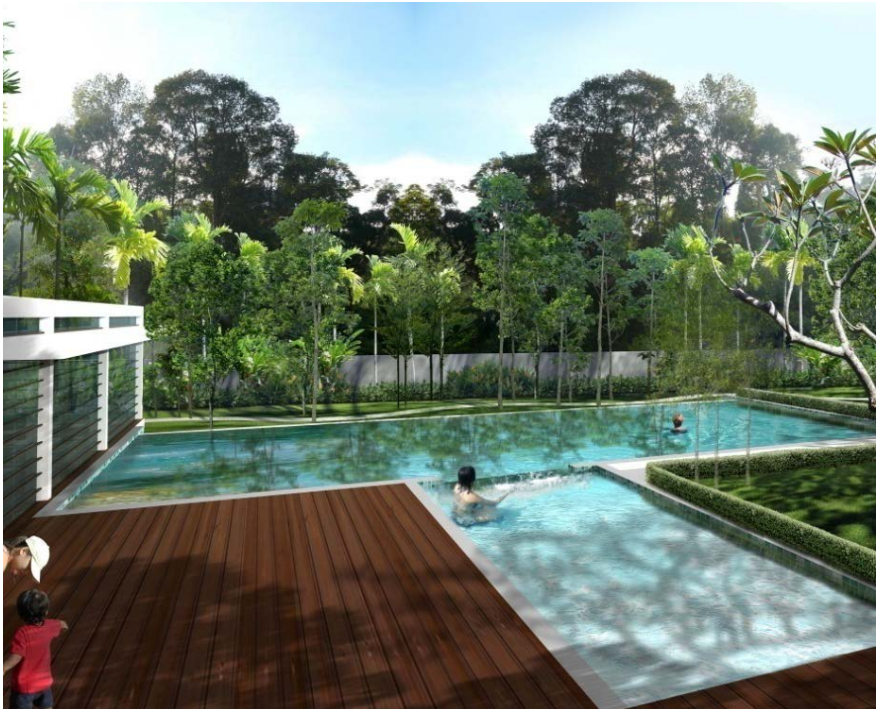
Oceanami Resort
Long Hai
Vietnam
(Designed 2010)



DLTN Residence
Bukit Damansara,
Kuala Lumpur,
Malaysia
(Designed 2012,
Under Construction)



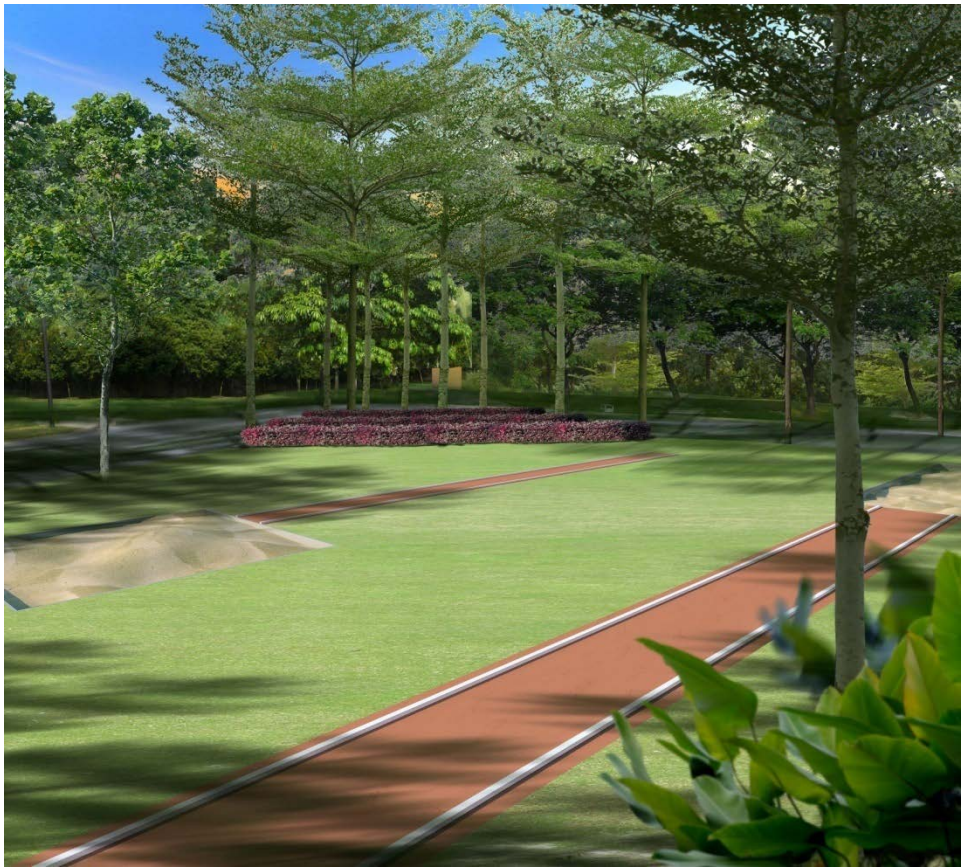
DLTN Residence
Bukit Damansara,
Kuala Lumpur,
Malaysia
(Designed 2012,
Under Construction)



**Taylor's International
School**
Selangor,
Malaysia
(Designed 2012,
Under Construction)



**Taylor's International
School**
Selangor,
Malaysia
(Designed 2012,
Under Construction)



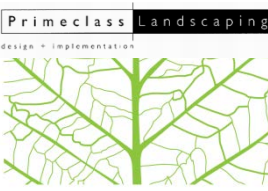
Desa Hill Villas
Desa Petaling, Kuala Lumpur
Malaysia
(Designed 2013)



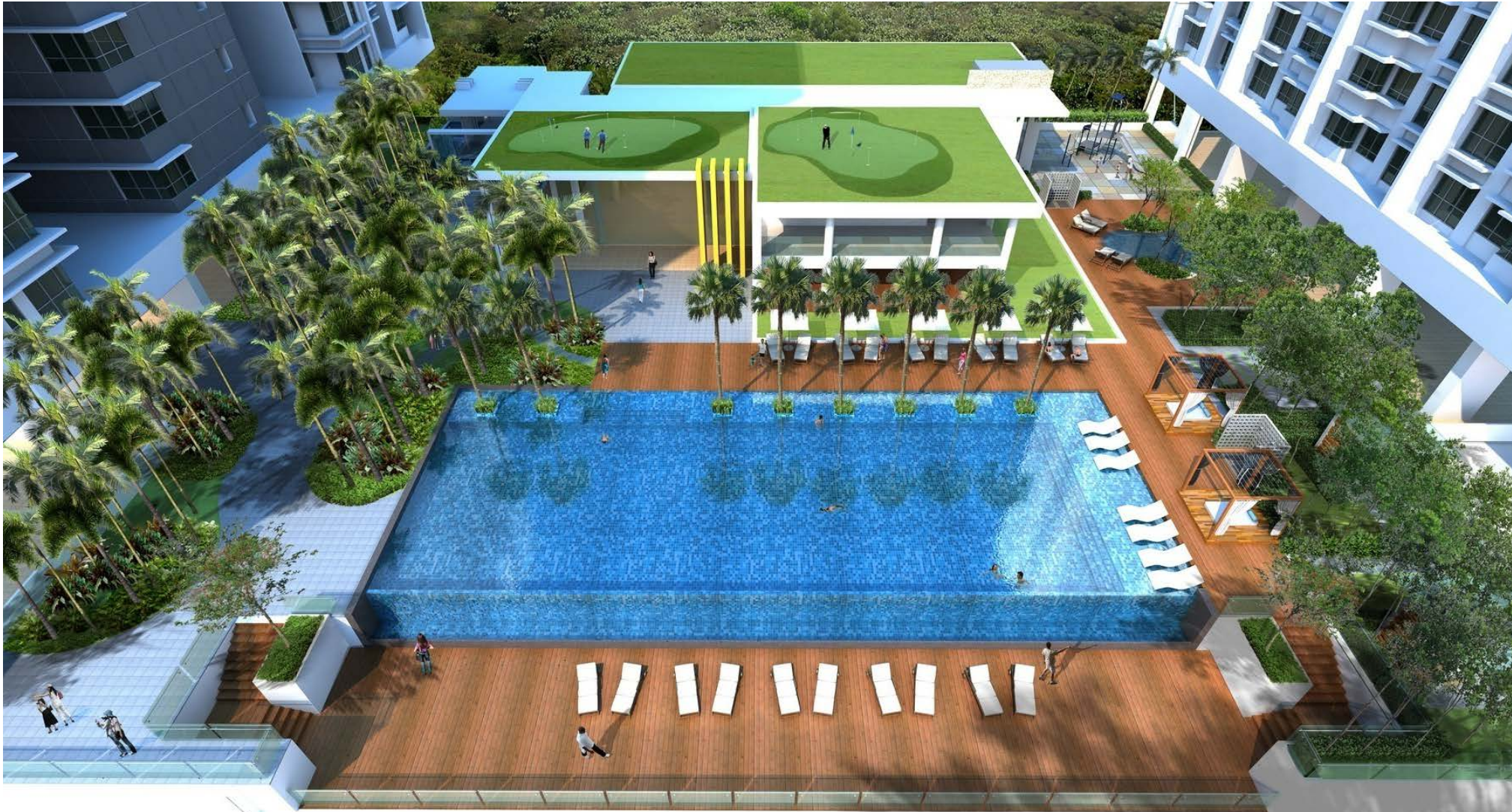
Desa Hill Villas
Desa Petaling, Kuala Lumpur
Malaysia
(Designed 2013)



Mountain View Condominium
Sungai Long, Selangor
Malaysia
(Designed 2013)



Mountain View Condominium
Sungai Long, Selangor
Malaysia
(Designed 2013)



MD3-2 & 3
Saigon South New City Centre,
Ho Chi Minh City
Vietnam
(Designed 2013)



MD3-2 & 3
Saigon South New City Centre,
Ho Chi Minh City
Vietnam
(Designed 2013)



S11 Residential Development
Saigon South New City Centre,
Ho Chi Minh City
Vietnam
(Designed 2015)



S11 Residential Development
Saigon South New City Centre,
Ho Chi Minh City
Vietnam
(Designed 2015)



Saigon South New City Centre,
Ho Chi Minh City
Vietnam
(Designed 2015)



H24 Residential Development
Saigon South New City Centre,
Ho Chi Minh City
Vietnam
(Designed 2015)



P2 Neighborhood Park
Saigon South New City Centre,
Ho Chi Minh City
Vietnam
(Designed 2016)



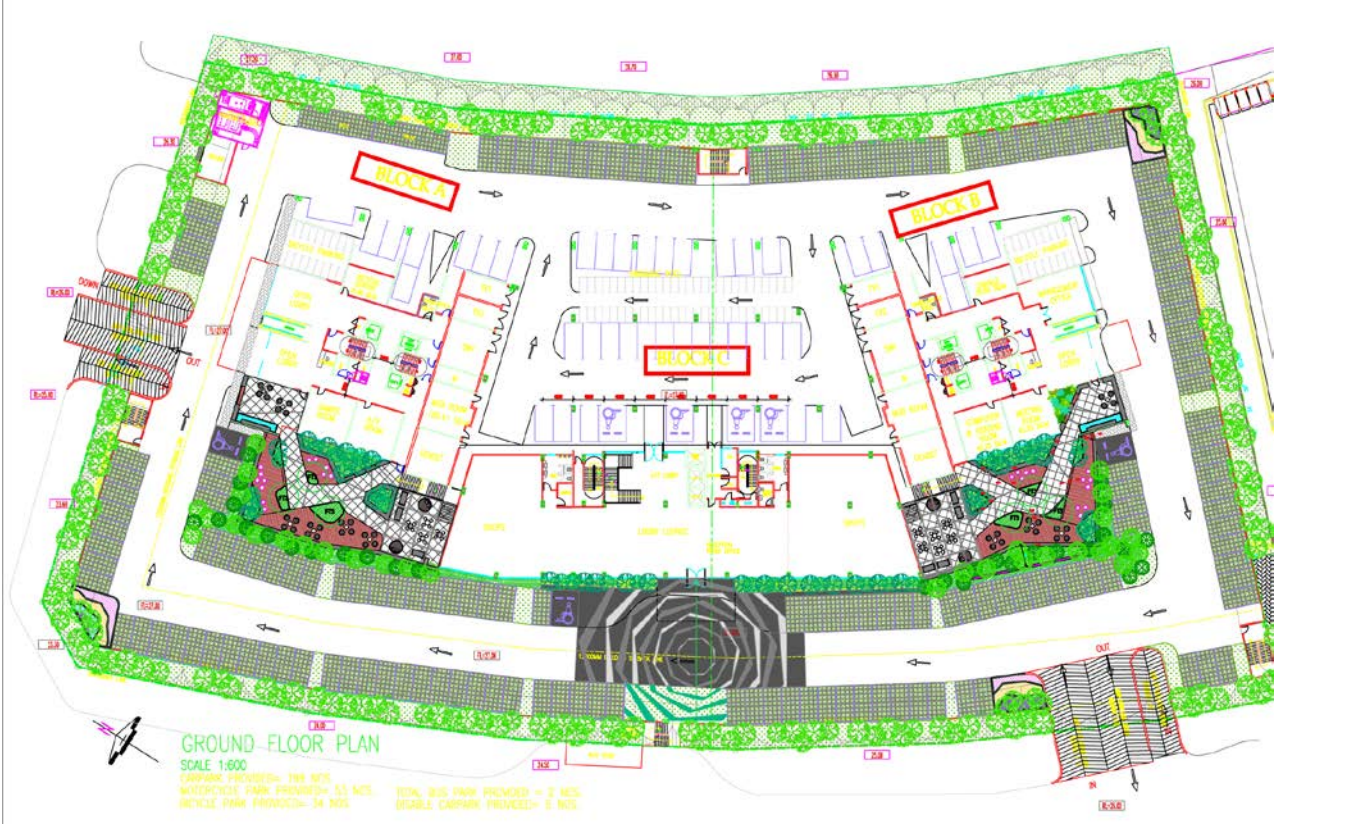
Saigon South Residence
Saigon South New City Centre,
Ho Chi Minh City
Vietnam
(Designed 2016)



Saigon South Residence
Saigon South New City Centre,
Ho Chi Minh City
Vietnam
(Designed 2016)



Lexicon, SOHO development
Cyberjaya
Malaysia
(Designed 2016)



Lexicon, SOHO development
Cyberjaya
Malaysia
(Designed 2016)



VERTICAL GREEN SYSTEM

GARDEN ROOF SYSTEM





GARDEN ROOF SYSTEM

- **SIMPLE**
Consists of only four elements: Reservoir Cell, Filter Membrane, Planting Medium & Plants.
- **LIGHTWEIGHT**
Less than 80kg/m² when saturated with water.
- **VERSATILE**
Suitable for flat roof & pitch roof up to 32°.
- **QUICK & EASY TO INSTALL**
Only 2-4 manpower is required.
- **TIME TESTED**
Over 12 years of research & application.

VERTICAL GREEN SYSTEM

- **SIMPLE**
Consists of only three elements: Aluminum Framing, Planting Medium & Plants.
- **LIGHTWEIGHT**
Less than 60kg/m² when saturated with water.
- **VERSATILE**
Can be cladded on wall or free standing structure.
- **QUICK & EASY TO INSTALL**
Only 2 manpower is required.
- **TIME TESTED**
Over 8 years of research & application.

MORE THAN

1 MILLION

SPECIES FACE EXTINCTION FROM
DISAPPEARING HABITAT AND
CHANGING ECOSYSTEM



Saves Aircon
Energy Cost



Retards Rainwater
Flow Rate



Beautifies
The Environment



Urban
Eco System



Improves
Air Quality



Filter & Recycles
Rainwater



Traps Dust &
Air Pollutants



Reduces Noise



Heat Insulation



Reduces Glare



GARDEN ROOF SYSTEM

A better way of living

Beautiful • Practical • Environmentally friendly • Economical. GardenRoof System is a lightweight roof planting system which once designed and put in place on any building, requires hardly any maintenance. With its amazing ability to improve the environment not only aesthetically, but also microclimatically, GreenRoof System is a superb ecological alternative to conventional roofs.

Research has proven that GardenRoof System can reduce the surface temperature of the roof by 31°C and ambient temperature by between 1.6° and 4.2°C. Rooms under a garden are also at least 8° to 4°C cooler than the air outside, when outdoor temperatures range between 26° and 30° C.

150^{SQM}
OF GARDENROOF
SYSTEM PRODUCES
ENOUGH OXYGEN FOR
ONE PERSON FOR
24^{HRS}

GARDENROOF SYSTEM CAN HELP REDUCE
YOUR AIR CONDITIONING COSTS BY
15%
OR MORE

GARDENROOF SYSTEM REDUCE
95%
OF HEAT GAIN

At one with nature

GardenRoof System also has many other unrivalled benefits :

- Increased energy efficiency, thus lowering cooling costs for buildings by effectively reducing heat
- Increases the lifespan of the roof membrane and protects the roof structure, thus also lowering maintenance costs
- Provides sound insulation naturally and efficiently reduces noise by at least 30 decibels.
- Improvement of air quality through the absorption of dust and pollutants, as well as by increasing the oxygen level
- Reduces rainwater run off into a stormdrain from the roof by 80% – thus minimizing unnecessary flooding
- Reduces reflective glare and heat emission



Beauty & sophisticated technology meet to create the gardenroof system

The GardenRoof Extensive Roof System

GardenRoof System is the first to introduce an Extensive Roof System in Singapore. Designed for both Extensive and Intensive roof application, the concept behind GardenRoof System is to retain as much precipitation in the growing medium and the reservoir cum drainage layers as the structural loading capacity will allow. This integrated system consists of :

Gardenhydrocell

A reservoir and drainage mat of 25mm protected by a layer of polypropylene woven staple fibres.

Gardenlite – Planting Medium

- A lightweight formula of pumice stone, expanded ceramics, sand, compost, peat, polymer and slow release fertilizers.
- The planting medium is specially blended according to the types of plants used for each individual project.
- The success of the GardenRoof System is in its unique technique of creating the right blend of planting medium according to the plants used.
- This substrate is only 76mm thick and less than 80kg/sqm (8N/sqm).

Selection of Plants

GardenRoof System has undergone field trials for more than 10 years in Singapore to ensure that our selected plants are able to thrive naturally on as little as 76mm of substrate in tropical conditions.

- Only plants that pass the harsheet, most stringent trials are utilized.
- Plants are specially selected for their hardiness, drought tolerance, resistance to disease and appearance.
- Minimal maintenance is required – no watering (unless rain is absent for more than a month). – no weeding or pruning.
- A wide range of colourful and hardy plants can be used to create every imaginable design by our experienced landscape consultant.



Technical specification



Gardenlite – Planting Medium

Planting medium are specially blended according to the types of plants used for each individual project. Various tests were conducted to establish the value of the different blends. Below are three such examples of tests :

Drainage And Water Retention Holding Test Capacity Result

TEST	Medium Blend 1	Medium Blend 2	Medium Blend 3
Water Infiltration Rate MM/HR	939	1229	1496
Apparent Density, KG/M ³	624	576	600
Water Holding Capacity, V%	81	93	81
Air Filled Void Space, V%	16	16	20

Plant Nutrition Laboratory Test

TEST	Medium Blend 1	Medium Blend 2	Medium Blend 3
Avail. Phosphorus (AS P)	1.23PPM	1.97PPM	0.31PPM
Avail. Zinc (AS Zn)	1.14PPM	0.66PPM	0.49PPM
C.E.C	11.70CMOL/K	8.00CMOL/K	6.40CMOL/K
Carbon to Nitrogen Ratio	20.00	13.00	23.00
Exch. Calcium (AS Ca)	139.80PPM	94.80PPM	79.20PPM
Exch. Copper (AS Cu)	0.03PPM	0.02PPM	0.02PPM
Exch. Iron (AS Fe)	0.23PPM	0.55PPM	0.30PPM
Exch. Magnesium (AS Mg)	40.80PPM	29.10PPM	22.30PPM
Exch. Manganese (AS Mn)	4.39PPM	3.06PPM	2.48PPM
Exch. Potassium (AS K)	208.40PPM	160.80PPM	132.00PPM
Exch. Sodium (AS Na)	144.30PPM	100.40PPM	78.40PPM
Organic Matter	13.00%	15.00%	13.00%
Soil PH (1:2.5)	6.45	6.48	6.46
Total Nitrogen (AS N)	3733.00PPM	6533.00PPM	3267.00PPM
Total Soluble Salts	2.44MS/CM	2.17MS/CM	2.33MS/CM

Note: The medium mix was analysed for nutrient content using Saturated Media Extract (SME) method. Total Nitrogen (Kjeldahl) was performed on sample passing through 1.0mm diameter sieve.

Weight of Planting Medium
Spread Over an Area of One Metre Square 75mm Deep

TEST	Medium Blend 1	Medium Blend 2	Medium Blend 3
Medium When Dry	57 kg/m ²	58 kg/m ²	57 kg/m ²
Medium When Saturated	67 kg/m ²	72 kg/m ²	68 kg/m ²



Gardenhydrocell

Gardenhydrocell is a uniquely designed High Impact Polystyrene (HIPS) drainage cum reservoir cell with water holding capacity embedded in a polypropylene woven fabric filter. It's biologically neutral, water resistant and recyclable.

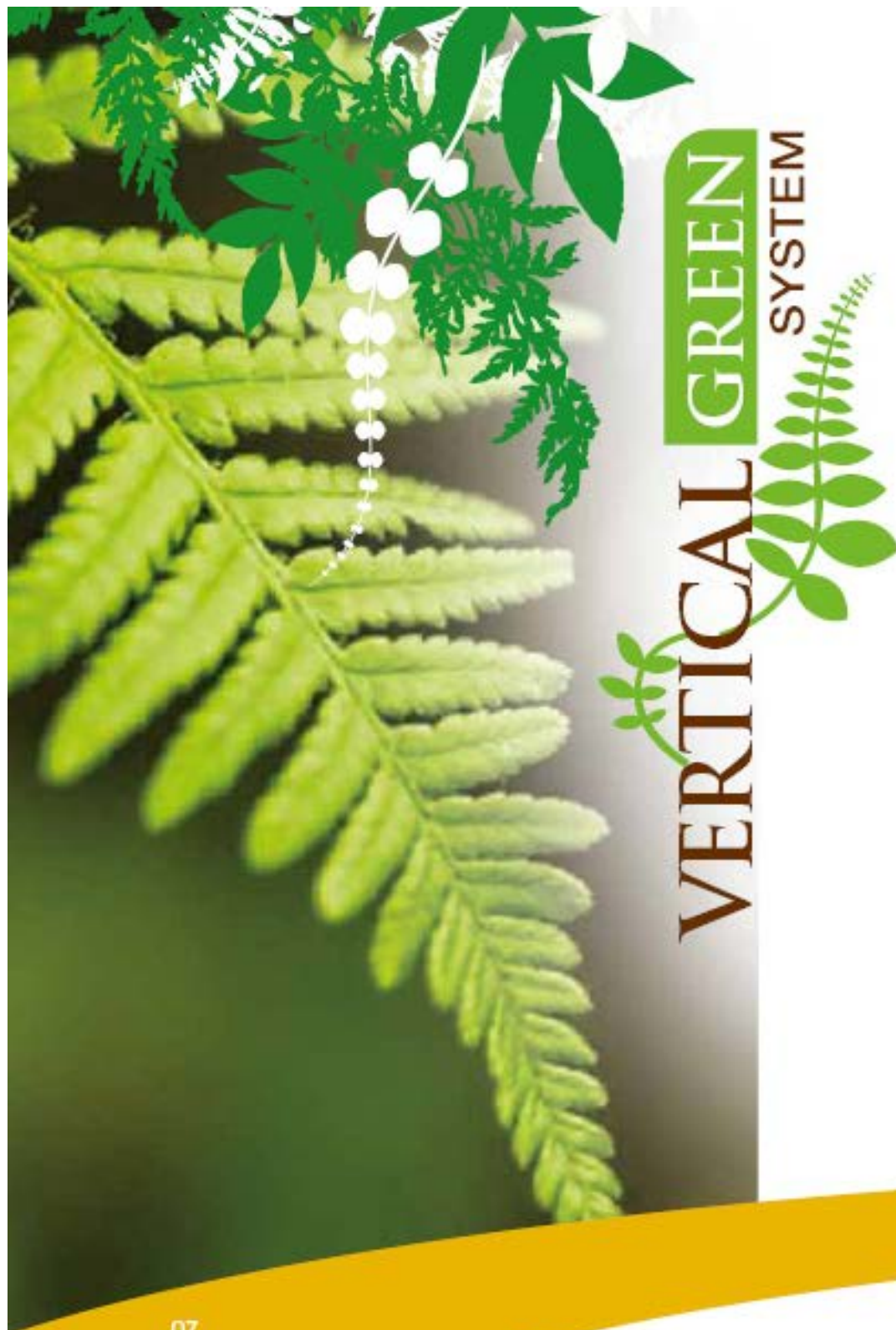
Drainage Cum Reservoir Cells

Polystyrene, High Impact

Appearance	Black, flexible multicoil, 0.8mm thickness, 25mm cell height
Water Retention Capacity	4.2 l/m ²
Water Drainage Capacity	2.4 l/sec. m ²
Compressive Strength @10%	303 KN/m ²

Polypropylene Fabric Filter

Appearance	Black, soft
Thickness	1 mm
Fibre Content, W%	99.6
Pore Size	472
Puncture Force	139 N



VERTICALGREEN SYSTEM SELECTED PLANTS
ARE ABLE TO THRIVE NATURALLY ON AS LITTLE AS

75^{mm}
OF SUBSTRATE
IN TROPICAL
CONDITIONS

The VerticalGreen System can be installed in a combination of patterns, providing good insulation against heat and noise pollution and increases oxygen in the atmosphere. VerticalGreen System comprises of specially formulated planting medium encased in an aluminum module, ready for installation onto wall or free standing structure. It has a unique irrigation system incorporated in the planting module for easy fitting to any water source.

Proprietary Planting Medium

Specially formulated planting media for each project, consisting of pumic stones, compost/peat, expanded ceramic and at times with polymer added, depending on plant types.

Irrigation

All planting modules have self contained irrigation system connected to main supply. Measured amount of water will be released according to the needs of each plant type and planting medium formula to prevent under-watering/over watering by a specially set timer.

ECOSOLUTIONS FOR SUSTAINABLE DEVELOPMENT



Versatile, beautiful and environmentally friendly

VertiLite

This is a light weight formula planting medium, specially blended according to the types of plants used for each individual project, provides enhancement and establishment of the plants.

VertiBoard

The uniquely light weight VertiBoard is ideal for Vertical Greenery. Its porosity not only allows plants roots penetration to ensure firmness, it also allows adequate amount of water to pass through to facilitate plants' survival. It also prevents loose particles from falling off.

VertiFrame

The light weight powder coated aluminum panels, with a variation of customized sizes, offer simple and quick installation and replacement.

VertiBase

The powder coated aluminum VertiBase is designed to secure the VertiFrame firmly onto the wall or free standing structure, as well as to prevent unnecessary vibration and damage. It is light weight and corrosion resistance, thus creating a sustainable system that is practical and cost-friendly with minimal maintenance as required.



VERTICAL GREEN SYSTEM

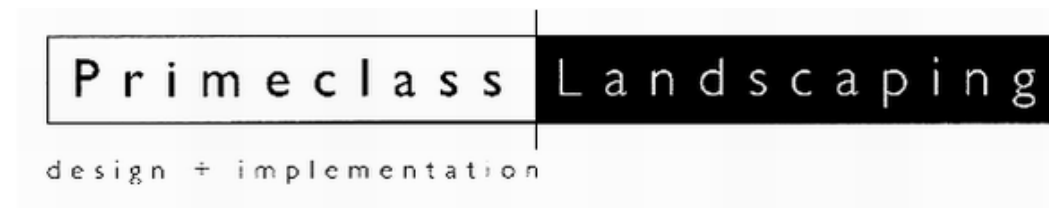
Padi House, Setia Walk
Puchong, Selangor
Malaysia
(Completed in 2013)



Padi House, Setia Walk
Puchong, Selangor
Malaysia
(Completed in 2013)



COMPANY ORGANIZATION CHART



**CHAIRMAN
ONG SOON HENG**

**DIRECTOR
LEE HENG SIONG
LIM H'SE JINH
MS CHEN SOOK PING**

ADMINISTRATIONS

HIEE CHOI WAN

**LANDSCAPE
ARCHITECTS**

**WONG YOKE HONG
CYNDI CHANG
JASON LING**

SITE MANAGEMENT

**SITE MANAGER
RAMAKRISHNAN RAJOO**

**SITE SUPERVISOR
VINOOTHAN RAMAKRISHNAN**

SITE WORKERS

20 STAFF



www.pclsb.com A member of the Primeclass Group of Companies



Primeclass Landscaping Sdn. Bhd. (274082 V)
5th Floor, Prima 8, Prima Avenue, Block 3508.
Jalan Teknokrat 6, 63000 Cyberjaya, Selangor D.E.
T: +603 8320 3399 f: +603 8320 3366 info@pclsb.com